

The New Standard

KOLENIK

BESPOKE CABINETS MADE IN THE NETHERLANDS

Hello,

It may sound peculiar coming from a cabinet,
but I'd like to seize this moment to make a
confession. I can't do without you. Over the
past few years, we've become really close.
Or at least that's how I feel. Close enough to
know I'll always have your back. Protecting
your valuables with my body. At your service,
to kick start each day anew.

Yours sincerely,

Your Cabinet

PS I like how you wear your
heart on your sleeve.



CONTENTS

Part one A Story about a Cabinet

04

Part two A Sense of Luxury

14

Part three Considered to Last

32

Part four A Matter of Details

48

Part five References

62

Useful Info

80

A Story about a Cabinet



ABOUT KOLENIK

Uniting craftsmanship and technology, style and sustainability, Kolenik proposes a unique boutique experience of bespoke cabinet design.

Kolenik was born out of a passion to find the best cabinet solution, doing the right thing in the most alluring way. A real solution to a real need, with optimum space to protect your valuables. Enriching your daily ritual of dressing and undressing. Consider it our take on 21st-century luxury, where technological innovation, sustainability, modern craftsmanship, passion and knowledge lead to a more effective design process, better client service, and ultimately, domestic clarity and peace of mind.

With an eye for the smallest detail and utmost respect for our natural surroundings, each of our personalized closets is a direct reflection of an enhanced experience. From first impression to final installation, this is something we take care of personally.

In everything we do, optimization is key: think advanced design, in every step of the process. We ensure a seamless experience, selecting the perfect fit for every single client.





THE NEW STANDARD IN BOUTIQUE DESIGN

To us, making the journey as pleasant and supportive as the lasting quality of the tailor-made final outcome are two sides of the same coin. We're designing the new standard in high-end cabinet design, by updating the rules. Smart, sartorial and sustainable design shapes the new luxury aesthetic. Resulting in an iconic design that protects your valuables, and caresses your space. Establishing an overall sense of clarity and calm in your everyday life.

THE CREAM OF THE CROP

Say you like what you see. But how do you ensure yourself that what's beautiful is also the best for you? We dare to say that we take things a little further when it comes to our bespoke designs. How? For one, our designs lack any visually distracting drilling holes. Instead of concealing them, we avoid placing them at all. Each cabinet is designed in such a way that compartments are always aligned in height. Ensuring a pleasant and balanced appearance. Whatever your choices are.

Also, our cabinets are mounted in a way that is invisible. Ensuring that you only see what delights the eye.

Service is another asset we take pride in. After assemblage, we'll personally take care of handing over your dream cabinet in a perfect state - dust-free and with anti-static qualities.



Part two

Luxury is all about stimulating the senses.
Awakening them makes us feel gracious, loved,
supported, and connected.

A Sense of Luxury



See

Observe the morning dew, its crystalline petals subtly mirrored in the frosted window. Gaze at the stars on a new-moon evening. Look as far as the mind can see. See what you dare to see.



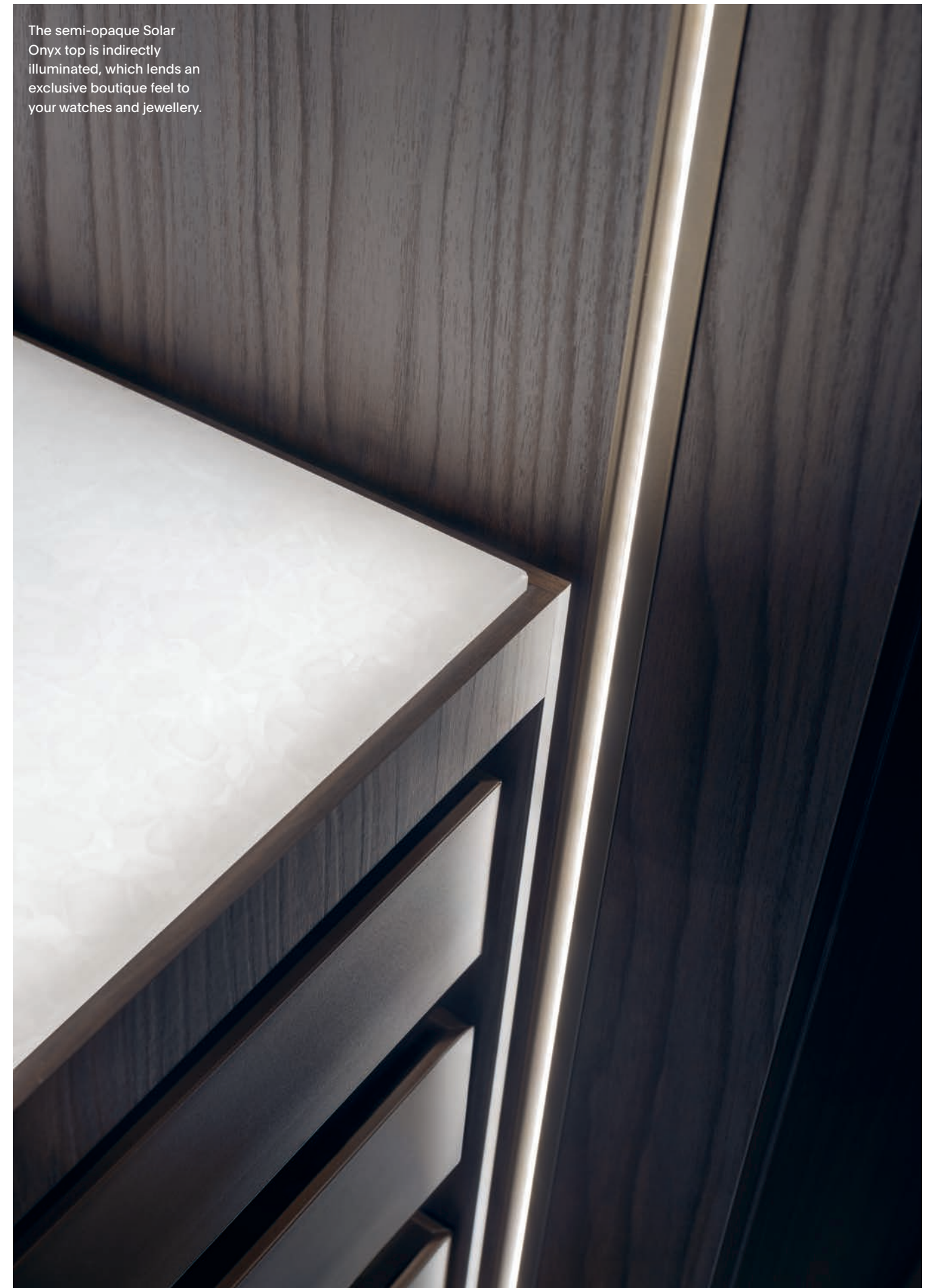
The Power of Vision

What we see depends highly on our mindset. Mental chaos leads us to a completely different reality than when we watch the space around us in a calm, balanced state. Imagine that a closet could help you achieve that too.

To see, we need light. Darkness keeps us from entering the visual world. Our insert cupboards with drawers and trouser racks are finished with a Solar Onyx top. The semi-opaque panel is indirectly illuminated, which lends an exclusive boutique feel to your watches, jewellery or bags. Crafted from recycled solar panels, the material radiates all the beauty of pure white onyx but is sustainably produced.

At night, one can dim the Solar Onyx panels to 20%, providing perfect orientation light. When opening a cupboard, subtle lighting fades up softly. When closing it again, the lighting gently fades down. It's highly intuitive.

The semi-opaque Solar Onyx top is indirectly illuminated, which lends an exclusive boutique feel to your watches and jewellery.





Feel

Close your eyes. Feel the gentle sea breeze, dancing on your skin. Smell the vivid, woody greens of the spirits in the forest. Caress the Kashmir plaid that covers your legs.



The Nature of Feeling

Memories are built on feelings. Words may help to ignite feelings, to reach inside, but feelings can easily thrive with no word spoken. One can own little and still feel rich.

Feeling good is also linked to doing the right thing. The times we live in demand a conscious attitude towards Earth's limited resources. Luckily, desire to change has fueled innovation - design showing up at the forefront of the green game.

It has led us to Italian-born eco leather, a beautiful, cruelty-free material that easily competes with real leather. It's an innovative material that only becomes more beautiful over time. Our eco leather inlay trays (flip to the References section to learn more about these) protect your valuables, and cause no harm to the environment.



To protect your valuable accessories in style, we designed four different eco leather inlay trays.

Smell

Fragrances can bring you back home. The smell of your childhood. The bouquet of freshly picked flowers. Scents that trigger memories, and harvest new ones.



The Scent of Luxury

What does domestic luxury smell like? One answer is Kolenik's signature fragrance. Based on the tailor-made cabinet's generous features and sustainable character, a nose concocted no less than 20 potential blends for us, using only natural ingredients.

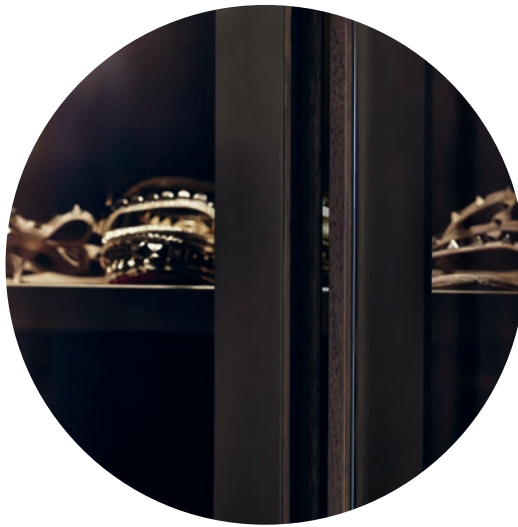
A specific scent is just as much a material in the palette of design choices as the type of wood or the colour scheme. Burned wood or grass can evoke a bold, daring ambiance. Hot spices fuel a powerful mood. The final Kolenik signature fragrance is a contemporary, youthful gentleman-in-disguise-as-a-gentlewoman: refined and eloquent, subtle yet confident, warm and grounded. This is thanks to enticing ingredients such as cardamom, oakmoss, styrax, leather, cognac, sandalwood, vetiver, and petitgrain.



A custom-designed case helps the all-natural fragrance seamlessly integrate with the cabinet.

Touch

The mere fact that we can *feel touched* by something, or someone, hints at the powerful implications of this humble five-letter word. Touch fuels realness, making things tangible and emotionally understood.



A Touch of Wood

Being touched mimics a subtle point of no return, prompted by a gentle stroke. Your hand on a cashmere jumper. Fingers tracing the surface of a leather pattern's details. The silk finishing of brushed metal.

In design, although often surpassed in importance by the look of things, touch boasts brutal soul power. As if the pleasurable contact between fingertips and material literally transforms into a lasting mental and bodily imprint.

This is one of the reasons we opted to use solid ash for our door handles. An easily underestimated closet component, yet actually a cornerstone in the daily ritual of getting dressed. Not only do the solid ash handles with walnut finishing lend a subtle contrast to the resilient melamine door fronts, but their tactile quality is unmistakably pleasant as well.



All door panels are finished with elegant ash door handles, finished in dark or bleached walnut.

Considered to Last



TAILORED TO YOUR NEEDS

How to start designing the ideal cupboard? Simply start by counting the number of jackets, trousers, shoes... everything. This will enable your dealer or interior architect to build a matching bespoke cabinet design for you, with a certain amount of extra space for new items. This is tailored design for real life, so it has to fit.

SET SEAMLESSLY INTO THE WALL

We use the leftover space for framing and groove details. The cupboard is set seamlessly into the wall, flush with the plasterwork so that it appears to float. After our craftspeople have installed your cupboard, it's ready for immediate use.

NON-STANDARD SPACES

Our tailor-made approach ensures that we will configure the desired cabinet to fit neatly into your available space. Maybe you'd like to use it as a room divider? Imagine the cupboard standing freely in the space, perfectly finished on all sides. This is the chosen option of many. For an extra luxurious touch, the entire cupboard surround can be finished in dark or bleached walnut, just like the cupboard itself, so that it becomes a single entity.

Please turn to the References section on page 64 to see all the options.

KOLENIK

I think it's beautiful
the way
you sparkle
when you talk about
the things you love

ATTICUS







Any remaining space around the cupboard is finished by us and either plastered or painted, so that the cupboard appears to float against the wall.

SAVOIR-FAIRE

Of all the cabinet's features, the two that stand out the most are its excellent craftsmanship and generosity. Craftsmanship leading to an impeccable cabinet; a sound design with a bold face and lasting appeal. And generosity thanks to its DNA: the attention to every detail, but also, literally, the generous design elements.

EXTRA DEEP CUPBOARDS

Take the choice of cupboard depths for example: with 47 cm and 67 cm more depth than usual, your clothes have plenty of space and you can store your winter coats with ease.

CORNER ELEMENT OR BOUTIQUE ISLAND?

Need more? A corner element helps you make the most of your available space, with ample room for (extra-) long evening dresses and coats, as well as folded clothes and boxes. If there's enough space, an island makes for a perfect, boutique stylistic element. Its four modules have deep drawers that give you extra capacity. This frees up space in your cabinet to use for hanging clothes. You can choose to customize your island with luxury features like eco leather inlays, bronze-coloured drawers and Solar Onyx shelves. The island measures 160 × 96 × 99 cm.

KOLENIK SUMMUM

For those who need even more generous options, our elite service is a welcome relief. This top-notch design service with undeniable anything-is-possible-character is here to realize your wildest interior dreams. Think seamlessly-integrated design gadgets for grown-ups, such as hidden safes and hydraulic-operated shelves that you can raise or lower to showcase your watches.

Sustainability Manifesto

True luxury implies taking care. Care of yourself, the people around you, and the planet. After all, we're only in this magical place for a short while. Live large, nurture nature. Things can be that simple.

99% Recycled

In our workshop, we breathe new life into old pallets. Beneath its finishing, 99% of a Kolenik cabinet's body is made using fibres from recycled cupboards—an environmentally friendly alternative to widely-used MDF.

Solar power

Our semi-transparent Solar Onyx inset cupboards are made from recycled solar panel glass, directly sourced from Germany. These radiate all the beauty of pure white onyx, but are sustainably produced.

Lasting Quality

Our cabinets are made to last for life, using the best possible choices of materials to withstand the passing of time. From solid ash door handles to a durable melamine finishing and premium-bronze eco leather for our trays and boxes.

Non Toxic

All wooden elements carry the internationally recognized formaldehyde certificate, meaning there are no toxic formaldehyde emissions released over time.

Zero Packaging Waste

Say goodbye to wasteful packaging materials: we pack all our cupboard components in luxurious, reusable flight cases—reducing waste while preventing transport damage.

Eco Leather

A luxurious addition to your personalized cabinet, our premium trays and boxes are fashioned from high-quality, bronze eco leather.

Going Local

We avoid long transportation distances by manufacturing our cabinets in the Netherlands, and continuously optimize the sourcing of all materials as close by as possible. In the case of the glass and solar panels, we go directly to Germany. And even our Kolenik fragrance is a product of local craftsmanship.

Carbon Neutral

Sometimes, all it takes is changing a habit. Innovation is leading the way to a greener world. This is what allowed us to opt for the carbon-neutral print production of this magazine. The cover in particular is crafted from *Miscanthus* (Elephant grass), a fast-growing super reed that is capable of absorbing up to four times as much CO₂ as a forest of similar size.

Choose with Love

Key to a sustainable luxurious lifestyle is choosing to surround yourself with products you really love. Products that bear a soul, and consistently add quality and balance to your daily life. An interior should outlive you. If your situation changes, our flexible design configuration allows you to easily accommodate your adapted needs.



CONSIDERED TO LAST

Watch carefully,
the magic that occurs
when you give a person
just enough comfort
to be themselves

ATTICUS



FIT FOR LIFE

Our cabinets are designed to last a lifetime. Why? Because once you know what you need and like, we promise the perfect fit. High-end materials make our bespoke cabinets a lasting option – timeless chic and durability are the new black.

Have your cupboard needs changed over time? Not to worry, each cabinet can be easily refined and updated to accommodate this. For an enhanced daily user experience, we added tons of smart details.

For instance, the hanging sections incorporate a clothes lift. The rail moves smoothly down to eye level so that you can take out your favourite jacket with ease. When you're done, it glides silently back to the upper hanging section.

Dimmable, warm LED lighting is another timeless asset. When you open your cupboard, subtle lighting fades softly up. When you close it again, the lights dim gently down. The concealed lighting indirectly illuminates the entire length of the cupboard on both sides. In addition, you can also integrate dimmable lighting beneath the Solar Onyx inset cupboards.

A Matter of Details

In life, all is in the details. The same goes for our bespoke designs. Tailor-made cabinets that adapt to who you are, how you live and what you need to feel good. Each cabinet is designed right on the button, so to speak. A sartorial design through and through. Because with true luxury, even the smallest details matter.





Eye for perfection meets healthy design obsession, with custom-designed finishing elements to ensure a perfect exterior and interior.



Warm, white LED lighting illuminates everything from beneath - perfect for displaying watches or jewellery.



Translucent-bronze glass door panels add a subtly luxurious allure to the room.



Each cabinet reflects a wonderful world of materials.



Concealed lighting indirectly illuminates the entire length of the cupboard on both sides.



Part five

Facts and figures to help bring
your desired cabinet to life.

References

At A Glance

Pick your favourite material to finish your cupboard.



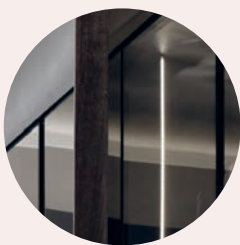
Bronze powder-coated aluminium

All our cupboard components are made of aluminium and hand finished with a beautiful, double-layered bronze coating. We use aluminium to ensure that everything is extra strong and light, and that the drawers do not twist when pulled out.



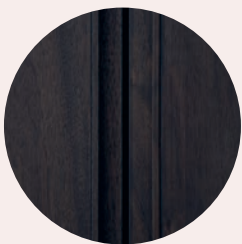
Dark or bleached walnut

You can choose to have the cupboards finished in dark or bleached walnut. An exceptionally high-quality, melamine walnut finish is applied to a base of wood fibre made from recycled furniture.



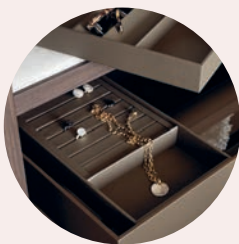
Bronze-tinted glass

The 5 mm-thick, tempered glass doors have a subtle bronze reflective coating. This creates a sophisticated transparency that conceals what's inside, but emphasizes the spatiality of the cupboard. The glass is also UV resistant.



Solid wood

The door handles and frames that hold the glass are crafted from solid ash and stained in a dark or bleached walnut tone. We use wood from sustainably cultivated trees, which actively contributes to cleaner air because young trees absorb more CO₂ than old trees.



Eco leather trays

These luxurious eco leather bases make striking drawer trays that you can combine with compartments for storing your belts, ties, jewellery or glasses. They fit in both the deep and shallow drawers, or can float on top of the trouser rack. The special backing makes them feel extra soft.



Solar Onyx

The island, inset cupboards with drawers and trouser racks are finished with a Solar Onyx top. The semi-opaque panel is indirectly illuminated, which lends an exclusive boutique feel to your watches, jewellery or bags.



Details Matter

The result of constant improvement, this wide range of excellent details is nothing short of perfection.

Doors



BRONZE GLASS DOORS

The bronze glass doors are subtly reflective and protect your clothes from UV discolouration. Solid wood handles run down the entire length of the door. We work with carefully selected walnut, but the wood may contain small irregularities as it is a natural product.



WALNUT DOORS

The dark or bleached walnut doors are fitted with solid wood handles. These run down the entire length of the door, so anyone can open them with ease. We work with carefully selected ash, but the wood may contain small irregularities as it is a natural product.

Clothes Rail



Our clothes rails run from wall to wall in order to make maximum use of the space. A 100 cm wide cupboard can accommodate 27 shirts or 16 jackets, and a 50 cm wide cupboard can take 13 shirts or 8 jackets. All rails are finished with a double layer of bronze powder coating and have a recycled plastic cover that prevents the hangers from damaging the hanging rod.

Clothes Lift



The clothes lift helps you use the cabinet's space to the full, while keeping the contents super accessible. The handle and dampened suspension make the lift easy to operate, despite the height. Each clothes lift has a functional width of 89 cm, and can carry around 25 shirts or 15 jackets.

Trouser Rack



The Kolenik Clothes Hanger collection includes hangers with a bar especially designed for trousers. Chinos, jeans or trousers without a matching jacket can also be hung up smoothly thanks to the pull-out trouser rack. The racks have space for five or eleven pairs of trousers.

Shelves



WALNUT SHELVES

Wild on wood? For our 25 mm thick shelves, choose between dark or bleached walnut.



BRONZE GLASS SHELVES

Fancy an upgrade? Our glass shelves are framed in bronze steel.



SINGLE AND DOUBLE SHOE SHELF

To prevent shoes from slipping downwards, the shoe shelves are fitted with a double strip. The shallow shoe cupboard (47cm) with the single shoe shelf has space for 24 pairs of shoes. The deep shoe cupboard (67cm) with the double shoe shelf accommodates a total of 48 pairs.

Lighting



Optional LED lighting is indirectly positioned to illuminate the cupboard on both sides. The lighting works via the integrated sensors or via your home lighting system controls.

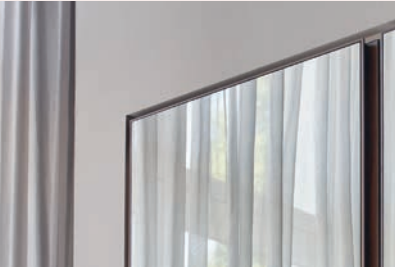
Drawer



SHALLOW AND DEEP DRAWERS

You can choose to equip your drawers with a leather inlay base, or with tempered bronze glass. Ideal for storing belts or ties.

Recessed Groove



RECESSED GROOVE DETAIL

We finish the walls around all cupboards so that every cabinet appears to be seamlessly incorporated into the room. By cutting an elegant 10 mm groove around the borders, we make the cupboards subtly break free of the wall and appear to float.

Accessories

From eco leather trays and tailor-made boxes to custom clothes hangers in all shapes and sizes.

Leather Trays & Box

Our premium trays and box make a luxurious addition to your cabinet. They're fashioned from premium-bronze eco leather from Italy. We've designed four tailor-made trays to store sunglasses, jewellery, ties and belts. You can tuck them away out of sight - the trays fit in all drawers - or display them on the front row, on a rack or in a drawer. The box is ideal for accessories that you don't need every day, like summer sandals. Compatible with all the cabinet's shelves, its universal size of 350 × 350 × 260 mm is neither too small nor too large.



BOX
F-9091



SUNGLASSES
F-9086



BELT
F-9087



JEWELLERY
F-9088



TIES
F-9089





Kids’ Hangers

Kids’ clothes deserve special treatment too, so we also make hangers for them. Just like the bigger versions, we can customize them with an engraving of their name or favourite animal.



KIDS HANGER
O-4330



SKIRT HANGER 22MM
O-4032



SKIRT HANGER 30MM
O-4132



SHIRT HANGER 22MM
O-4030



JACKET HANGER 30MM
O-4130



JACKET HANGER 50MM
O-4230



SUIT HANGER 22MM
O-4031



SUIT HANGER 30MM
O-4131



SUIT HANGER 50MM
O-4231

Imagine this, and 30 pair of ankle boots, 15 pair of pumps, 15 pair of sandals, 10 pair of sneakers, 5 pair of mules, 5 pair of knee-high boots, 5 pair of loafers, 5 pair of ballet flats, 10 pair of other shoes; 25 dresses, 39 office shirts, 5 coats, 4 shelves and 2 eco leather boxes...



K-1053

K-1058

K-1011

K-1027

K-3016

Could this be you, with 4 mini dresses, 4 midi dresses, 4 cocktail dresses, 4 maxi dresses, 4 gowns, 2 kaftans, 4 jumpsuits, 10 cardigans, 20 shirts, 11 pants, 5 drawers for lingerie and hosiery, a dozen pairs of shoes, and ample space on another 6 shelves?



K-1021

K-1037

K-1010

K-1035

Or what about 50 shirts, 15 coats, 10 suit-jackets, 10 jackets, 5 chinos, 6 pair of trousers, a zillion sweaters, turtlenecks and cardigans, 25 evening dresses, surely 8 belts, and 15 bags, 15 or more hats, caps and beanies, and at least 16 pair of different shoes?



K-1027

K-1036

K-1012

K-1072

K-1001



KOLENIK

kolenik.com
info@kolenik.com
+31(0)20 2259 444

For professional inquiries, please
send an e-mail to sales@kolenik.com

TO FIND THE NEAREST DEALER,
GO TO KOLENIK.COM/DEALERS



CONCEPT AND WORDS
Alexandra Onderwater
creaturesofcontent.nl

ART DIRECTION
Studio&
studioand.nl

PHOTOS
René van Dongen

VISUAL ESSAY (p.51-61)
Raw Color

CONTRIBUTORS
Caroline Parton (copy-editing)
Ben Blench (words)
Daniel Balda (photo p.16)
Loreen Hinz (photo p.20)

Carbon neutral print production | NL-001-465248 | www.natureOffice.com

